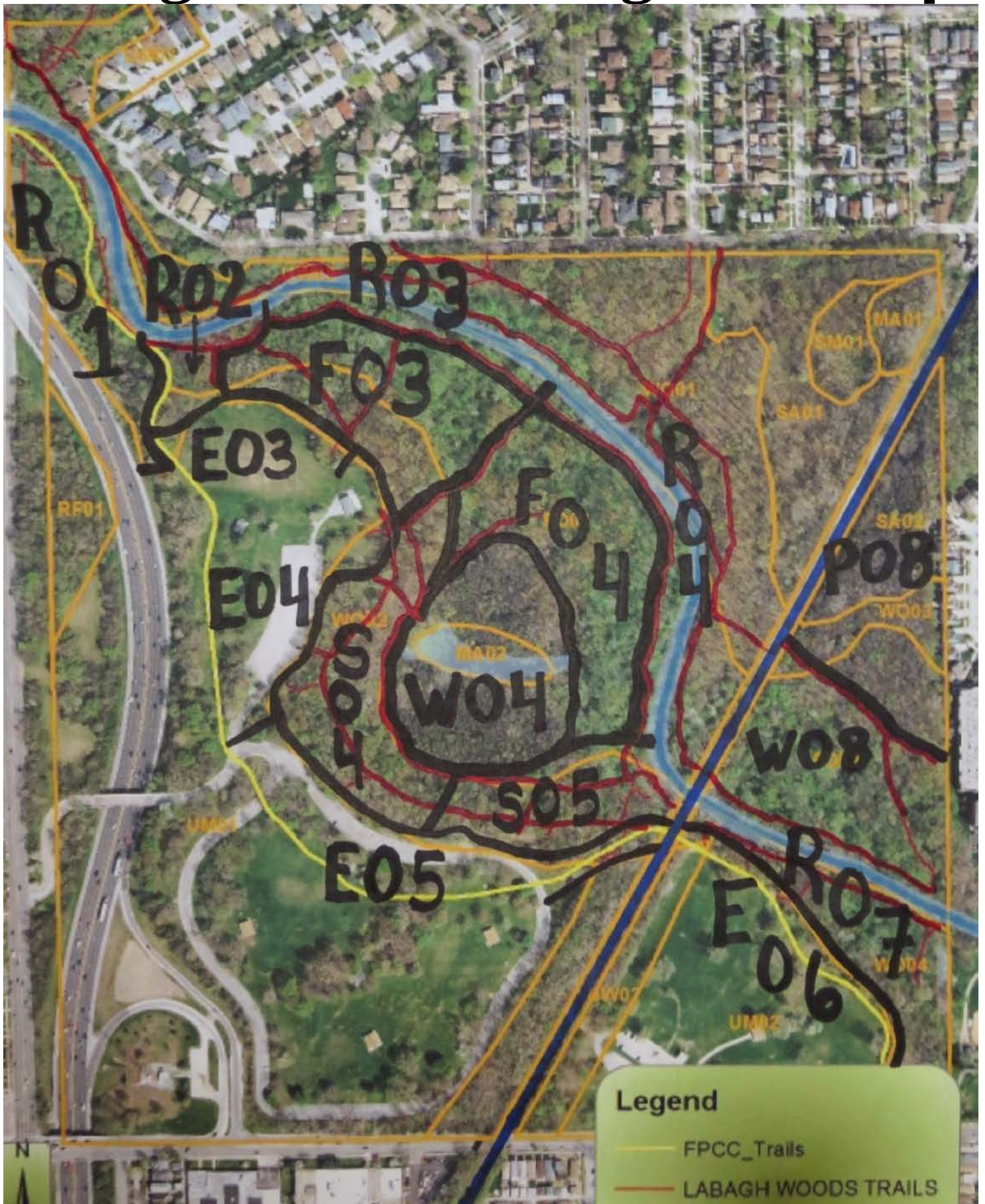


LaBagh Woods Planting Zones Map



LaBagh Woods Foot Trails Map



LaBagh Woods Planting Zones Map & Guide

The LaBagh Plantings map is a tool created by Judy Pollock and Jeff Skrentny, and revised with Linda & Dennis Marton, to allow LaBagh stewards and volunteers to know where our plantings are, and give each peanut a specific site and site number, so we can keep track of it, what is planted in it, and how those plantings are doing, and what needs to be replaced.

We begin with the basic premise that LaBagh is bisected by the North Branch of the Chicago River from roughly NW to SE and is also bisected by the Weber Spur railroad grade, roughly from SW to NE. This gives us four “quadrants” within LaBagh Woods. These four areas are the Sauganash Savanna & Wet Prairie area to the NW, the Big Slough & Flood Plain area and Picnic Groves to the SW, Irene Hernandez to the SE and the Little Slough and Upland Pole Tree area to the NE.

The Sauganash area has been managed by Larry Hodak and Pete Leki for years and consists of a river’s edge to the south, plus the forested slope, oak savannah and upland wet prairie to Bryn Mawr on the north, the Weber Spur railroad Grade to the east, and Cicero Avenue Bridge on the west.

The Slough quadrant is the largest of the areas, and consists of two large picnic groves with three different shelters, a narrow band of forest between the interstate and the river to the far NW, forested slopes, the wetland slough area, the floodplain forest and the river’s edge.

Irene Hernandez has a large picnic grove and one shelter, and also has a forested slope and rivers edge wild area that is VERY popular for birds.

Finally, the Little Slough area to the NE includes a river’s edge, a wetland or “little slough,” forested slope, and upland wet prairie area that is currently filled with pole trees. To the north of this area is a nice Swamp White Oak grove.

We have further divided three of these quadrants to help us keep track of where we have planted, what we have planted, roughly by habitat type. Our designations are as follows:

KEY:

R00: Designates **R**IVER's edge habitat

S00: Designates **S**LOPE habitat area

E00: Designates forest **E**DGE habitat area

F00: Designates **F**LOODPLAIN forest area

W00: Designates **W**ETLAND and Wetland forest areas

P00: Designates upland wet **P**RIARIE forested or savannah areas

HOW TO READ UNIT NUMBER:

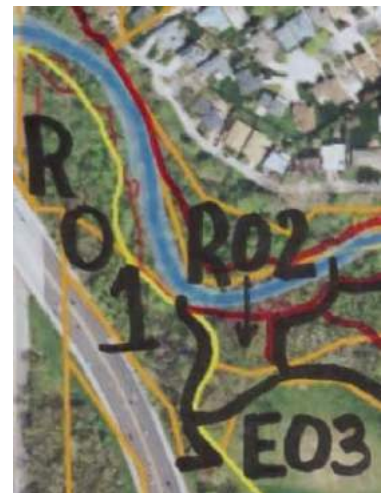
R02-007-16F is decoded to mean that this is a planting unit in an area along the **R**iver, it is in the 02 area, the areas are numbered from west to east. The 007 indicates that this was the seventh recorded planting for the area it is in. The plantings are NOT numbered sequentially. Finally, the 16F signifies that this was planted in 2016 in one of the **F**all planting efforts.

Beginning from the NW part of LaBagh, we have the following areas identified:

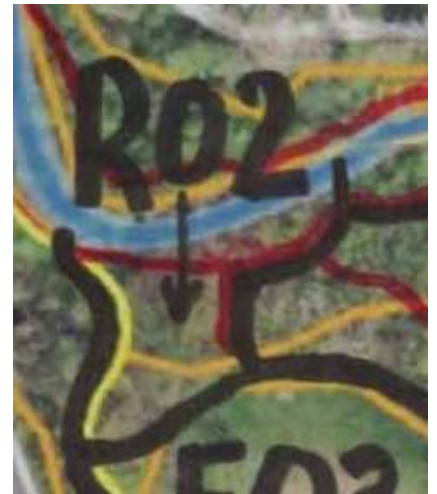
BIG SLOUGH & PICNIC GROVES QUADRANT (SW AREA)

R01: From Cicero Avenue / Bridge to the bottom of the slope were the walking & biking trails begin to rise. The bike path through this area was completed in the late spring of 2017, FPCC planted trees along the path in summer 2017; our first shrub plantings took place in fall of 2017.

- R01-001-17F (41.983118, 87.747610 – 33ft)
- R01-002-17F (41.983037, 87.747553 – 33ft)
- R01-003-17F (41.982983, 87.747340 – 33ft)
- R01-004-17F (41.982707, 87.747363 – 33ft)
- R01-005-17F (41.982631, 87.747275 – 33ft)
- R01-006-17F (41.982395, 87.747443 – 33ft)
- R01-007-17F (41.982150, 87.747267 – 33ft)
- R01-008-17F (41.982166, 87.747147 – 33ft)
- R01-009-17F (41.981929, 87.746897 – 33ft)
- R01-010-17F (41.981906, 87.746718 – 33ft)
- R01-011-17F (41.981840, 87.746579 – 33ft)
- R01-012-17F (41.981873, 87.746701 – 33ft)



R02: The rising and falling slope area right after R01, including the river's edge all the way out to the forest edge E03. Includes area west of the foot trail separating it from F03, but includes everything east of the bike path. We have plantings at the top of this hill, often called "Oak Hill," with more along the river's edge, which is pretty steep in this area.



- R02-001-16F (41.982061, 87.746084 – ??ft)
- R02-002-16F (41.981885, 87.746142 – ??ft)
- R02-003-16F (41.981819, 87.746017 – ??ft)
- R02-004-15F (41.981893, 87.745677 – ??ft)
- R02-005-15F (41.981919, 87.745931 – ??ft)
- R02-006-15F (41.981864, 87.745860 – ??ft)
- R02-007-15F (41.981864, 87.745832 – ??ft)
- R02-008-16F (41.981999, 87.745763 – ??ft)
- R02-009-16F (41.981718, 87.745711 – ??ft)
- R02-010-16F (41.982003, 87.745671 – ??ft)
- R02-011-17F (41.981724, 87.746448 – 33ft)
- R02-012-17F (41.981718, 87.746064 – 33ft)
- R02-013-17F (41.981896, 87.745983 – 33ft)
- R02-014-17F (41.981862, 87.745879 – 33ft)
- R02-015-17F (41.981675, 87.745876 – 33ft)
- R02-016-17F (41.981842, 87.745636 – 33ft)
- R02-017-17F (41.981980, 87.745555 – 33ft)

E03: This is the forest edge (*about 12-15 in from the cut grass edge*) from the bike path that comes up the slope, and goes around to where the foot path enters F03 at the large fallen tree just to the north of the concrete pavilion at Grove #1.



- E03-001-16F (41.981039, 87.744704 – ??ft)
- E03-002-16F (41.980884, 87.744694 – ??ft)
- E03-003-16F (41.980903, 87.744484 – 33ft)
- E03-004-16F (41.980948, 87.744310 – 33ft)
- E03-005-17S (41.981204, 87.744483 – 33ft)
- E03-006-17S (41.980841, 87.744572 – 33ft)
- E03-007-17S (41.980909, 87.744508 – 33ft)

E03-008-17S (41.980842, 87.744396 – 33ft)
E03-009-17S (41.980946, 87.744595 – 33ft)

F03: This is the floodplain forest that begins at the bottom of the slope where R02 ends on the east, and goes to where one of the main paths comes through from the concrete pavilion to where the S04 section of sloped forested area begins. This was one of the first areas where we installed plantings in the area where the large buckthorn grove once was.



F03-001-15F (41.982213, 87.744749 – ??ft)
F03-002-15F (41.981977, 87.743663 – ??ft)
F03-003-15F (41.981768, 87.743557 – ??ft)
F03-004-16F (41.980924, 87.744475 – ??ft)
F03-005-16F (41.980924, 87.744475 – ??ft)
F03-006-16F (41.981218, 87.744553 – ??ft)
F03-007-15F (41.981505, 87.744638 – ??ft)
F03-008-15F (41.981429, 87.745643 – ??ft)
F03-009-15F (41.981379, 87.745612 – ??ft)
F03-010-15F (41.981380, 87.745422 – ??ft)
F03-011-15S (41.981358, 87.745461 – ??ft)
F03-012-15F (41.981316, 87.745485 – ??ft)
F03-013-15F (41.981382, 87.745498 – ??ft)
F03-014-15S (41.981413, 87.744560 – ??ft)
F03-015-15S (41.981407, 87.744339 – ??ft)
F03-016-15S (41.981455, 87.744479 – ??ft)
F03-017-15F (41.981442, 87.744533 – ??ft)
F03-018-17S (41.980946, 87.744803 – 33ft)
F03-019-17S (41.981146, 87.744601 – 33ft)
F03-020-17S (41.980936, 87.744661 – 33ft)
F03-021-17S (41.981057, 87.744640 – 33ft)
F03-022-17S (41.981307, 87.744788 – 33ft)
F03-023-17S (41.981138, 87.744562 – 33ft)
F03-024-17S (41.981205, 87.744542 – 33ft)
F03-025-17S (41.981135, 87.744510 – 33ft)
F03-026-17S (41.981141, 87.744548 – 33ft)
F03-027-17S (41.981403, 87.744498 – 33ft)
F03-028-17S (41.981397, 87.744355 – 33ft)

F03-029-17S (41.981336, 87.744412 – 33ft)
F03-030-17S (41.981561, 87.743898 – 33ft)

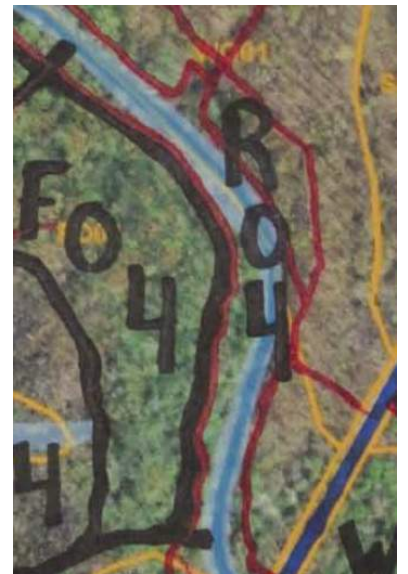
R03: This is the river's edge (*to the well used foot path*) that borders F03. This is an area that is prime for more river edge plantings.

R03-001-15F (41.982092, 87.744092 – ??ft)
R03-002-15F (41.981562, 87.742847 – ??ft)



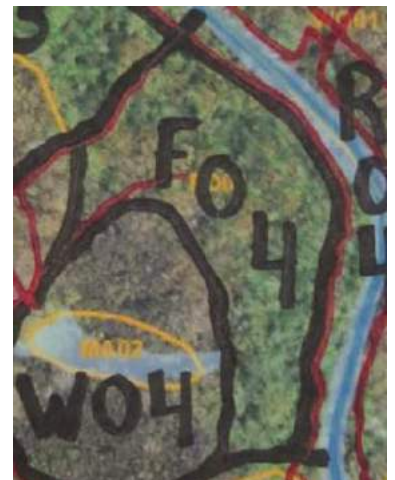
R04: Starting where R03 ends to the drainage / creek /ditch that comes out of the slough about 50 feet from trestle. This area is also a prime candidate for more plantings as proper plants become available.

R04-001-15F (41.980897, 87.741288 – ??ft)
R04-002-16S (41.980760, 87.741232 – ??ft)
R04-003-15S (41.980565, 87.741053 – ??ft)
R04-004-15F (41.979889, 87.740832 – ??ft)
R04-005-16F (41.979701, 87.741127 – ??ft)
R04-006-16F (41.979499, 87.740995 – ??ft)
R04-007-15F (41.979274, 87.741242 – ??ft)
R04-008-??? (41.978985, 87.741220 – ??ft)
R04-009-16S (41.978552, 87.741401 – ??ft)



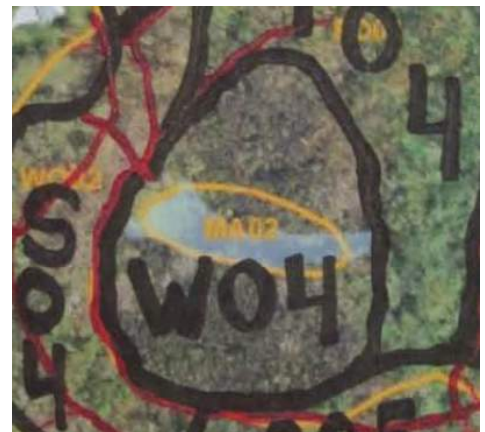
F04: The flood plain forest that roughly has R04 to the north and the slough area to its south. Numerous plantings are in this area.

F04-001-15F? (41.981319, 87.742645 – ??ft)
F04-002-16S (41.980198, 87.741299 – ??ft)
F04-003-16S (41.979794, 87.741464 – ??ft)
F04-004-16S (41.979927, 87.741148 – ??ft)
F04-005-16S (41.979820, 87.741458 – ??ft)
F04-006-16F? (41.979613, 87.741416 – ??ft)
F04-007-16F (41.979541, 87.741344 – ??ft)
F04-008-15F (41.979277, 87.741510 – ??ft)



F04-009-15F (41.979319, 87.741614 – ??ft)
 F04-010-16F (41.979218, 87.741663 – ??ft)
 F04-011-16F (41.979290, 87.741838 – ??ft)
 F04-012-15F (41.979187, 87.741780 – ??ft) (*n f, buckthorn enclosure*)
 F04-013-15F (41.979112, 87.741654 – ??ft)
 F04-014-16F (41.978848, 87.740984 – ??ft)
 F04-015-16F (41.979095, 87.741612 – ??ft)
 F04-016-15F (41.979008, 87.741910 – ??ft)
 F04-017-16S (41.978746, 87.741842 – ??ft) (*very wet, blue beech dead*)
 F04-018-16S (41.978553, 87.741766 – ??ft) (*very wet, blue beech dead*)
 F04-019-15F? (41.978653, 87.741483 – ??ft)
 F04-020-15F? (41.978476, 87.741183 – ??ft)

W04: This wetland and forested wetland is where the slough is, along with a predominately maple forest with some oaks. We have a few plantings in this area of water edge plants.



W04-001-15F (41.979578, 87.743611 – ??ft) (*not fenced, south of W04-002*)
 W04-002-15F (41.979575, 87.743573 – ??ft)
 W04-003-15F (41.979243, 87.742341 – ??ft)
 W04-004-15F (41.979428, 87.742407 – ??ft) (*not fenced, south of W04-003*)
 W04-005-15F (41.979279, 87.742200 – ??ft) (*n f, across slough from W04-003*)
 W04-006-17F (41.979575, 87.742431 – 33ft) (*3BB, n f, south of PRWA box*)
 W04-007-17F (41.979365, 87.742243 – 33ft) (*3BB, n f, west of leaning willow*)
 W04-008-17F (41.979397, 87.742200 – 33ft) (*3BB, n f, east of leaning willow*)
 W04-009-17F (41.979251, 87.743042 – 33ft) (*2BB, n f, in circle of dead s maple*)

S04: This critical avian habitat to the west and south of the slough is some of our best warbler habitat. This slope area is one of the most sensitive areas for restoration. One area was cleared to the south and east of the dance platform to begin the introduction of native shrubs in this opened area.

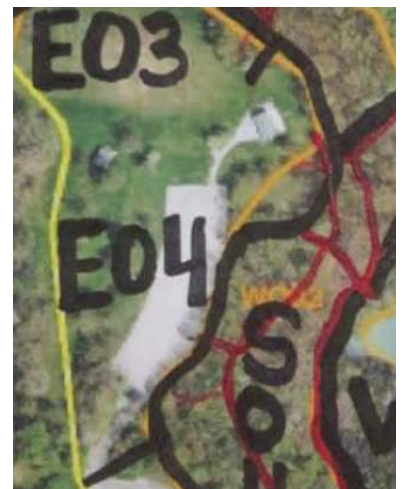
S04-001- NOT USED
 S04-002- NOT USED



S04-003-16F (41.979155, 87.744998 – ??ft)
S04-004-16F (41.979235, 87.745000 – ??ft)
S04-005-16? (41.979300, 87.744876 – ??ft)
S04-006-16F (41.979360, 87.745036 – ??ft)
S04-007A-16F (41.979260, 87.744701 – ??ft)
S04-007B-16F (41.979260, 87.744701 – ??ft)
S04-007B-16F (41.979260, 87.744701 – ??ft)
S04-008-16S (41.979243, 87.744620 – ??ft)
S04-009-16S (41.979236, 87.744781 – ??ft)
S04-010-16F (41.979312, 87.744714 – ??ft)
S04-011-16F (41.979362, 87.744722 – ??ft)
S04-012-16S (41.979470, 87.744491 – ??ft)
S04-013-16F (41.979523, 87.744451 – ??ft)
S04-014-16F (41.979403, 87.744380 – ??ft)
S04-015-16F (41.979510, 87.744421 – ??ft)
S04-016-16? (41.979297, 87.744419 – ??ft)
S04-017-16F (41.979402, 87.744384 – ??ft)
S04-018-16S (41.979479, 87.744097 – ??ft)
S04-019-16S (41.979364, 87.744317 – ??ft)
S04-020-16? (41.979557, 87.744294 – ??ft)
S04-021-16? (41.979512, 87.744305 – ??ft)
S04-022-16? (41.979387, 87.744062 – ??ft)
S04-023-16F (41.979391, 87.744049 – ??ft)
S04-024-16F (41.978844, 87.743983 – ??ft)
S04-025-16F (41.978764, 87.743885 – ??ft)
S04-026-16F (41.978668, 87.744087 – ??ft)
S04-027-16F (41.978436, 87.743861 – 16ft)
S04-028-16F (41.978235, 87.743984 – 33ft)

E04: Continuing from where E03 ends up along forest edge and parking lot to the Ella LaBagh Memorial Stone.

E04-001-16F (41.980969, 87.744365 – ??ft)
E04-002-16F (41.980849, 87.744399 – ??ft)
E04-003-16F (41.980833, 87.744147 – ??ft)
E04-004-17S (41.980833, 87.744411 – 33ft)
E04-005-17S (41.980367, 87.744380 – 33ft)
E04-006-17S (41.980314, 87.744303 – 33ft)
E04-007-17S (41.980367, 87.744016 – 33ft)
E04-008-17S (41.980337, 87.744483 – 33ft)



E04-009-17S (41.980181, 87.744571 – 33ft)
E04-010-17S (41.980171, 87.744218 – 33ft)
E04-011-17S (41.980067, 87.744645 – 33ft)
E04-012-17S (41.979862, 87.744602 – 33ft)
E04-013-17S (41.979765, 87.744615 – 33ft)
E04-014-16S (41.970470, 87.744980 – ??ft)
E04-015-16S (41.979765, 87.744615 – ??ft)

E05: This is the forest edge from the Ella LaBagh Stone where E04 ends to the west where the Weber Spur slope begins. We have one area of plantings here to help where the main entrance to the slough is from the parking lot area here.



E05-001-xxx
E05-002-xxx
E05-003-xxx
E05-004-17S (41.978818, 87.745165 – 33ft)
E05-005-17S (41.978683, 87.745098 – 33ft)
E05-006-17S (41.978457, 87.744859 – 33ft)
E05-007-17S (41.978320, 87.744602 – 33ft)
E05-008-17S (41.978300, 87.744667 – 33ft)
E05-009-17S (41.978066, 87.744275 – 33ft)
E05-010-17S (41.977988, 87.744258 – 33ft)
E05-011-17S (41.977804, 87.744012 – 33ft)
E05-012-17S (41.977888, 87.742524 – 33ft)
E05-013-17S (41.977803, 87.742825 – 33ft)
E05-014-17S (41.977920, 87.742411 – 33ft)
E05-015-17F (41.977721, 87.742300 – 33ft)
E05-016-17F (41.977228, 87.742297 – 33ft)
E05-017-17F (41.977653, 87.742077 – 33ft)
E05-018-17F (41.977412, 87.742167 – 33ft)
E05-019-17F (41.977617, 87.741982 – 33ft)
E05-020-17F (41.977569, 87.742125 – 33ft)
E05-021-17F (41.977690, 87.741683 – 33ft)
E05-022-17F (41.977873, 87.741827 – 33ft)
E05-023-17F (41.977842, 87.741698 – 33ft)
E05-024-17F (41.977837, 87.741732 – 33ft)
E05-025-17F (41.977889, 87.741546 – 33ft)

E05-026-17F (41.977775, 87.741489 – 33ft)
E05-027-17F (41.977780, 87.741412 – 33ft)
E05-028-17F (41.977855, 87.741479 – 33ft)
E05-029-17F (41.977852, 87.741491 – 33ft)
E05-030-17F (41.977872, 87.741429 – 33ft)
E05-031-17F (41.977917, 87.741407 – 33ft)
E05-032-17F (41.977943, 87.741289 – 33ft)
E05-033-17F (41.977984, 87.741224 – 33ft)

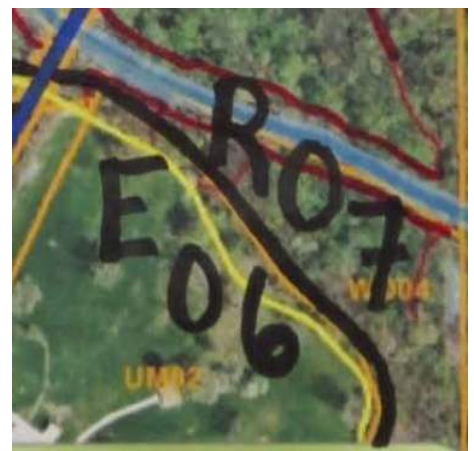
S05: This is the forested slope next to S04. They are roughly separated by the draining ditch that empties into the slough at it's south. The drainage pipe has been exposed from erosion here.



S05-001-16S (41.978239, 87.741844 – 16ft)
S05-002-16F (41.978180, 87.741682 – 33ft)
S05-003-16F (41.978233, 87.741321 – 16ft)
S05-004-16F (41.978148, 87.741613 – 16ft)
S05-005-16F (41.978086, 87.741645 – 16ft)
S05-006-16S (41.978230, 87.741499 – 33ft)
S05-007-15F (41.978381, 87.741203 – 16ft)
S05-008-16S (41.978273, 87.741232 – 16ft)

IRENE HERNANEZ QUADRANT (SE AREA)

E06: This is the edge area of the forest along R07 from the Rail Road Grade / Trestle to Foster Avenue. A major planning was done here in spring of 2016 and again in spring of 2017.



E06-001-16S (41.977216, 87.739848 - ??ft)
E06-002-16S (41.977120, 87.739627 - ??ft)
E06-003-15F (41.977028, 87.739608 - ??ft)
E06-004-16S (41.976959, 87.739464 - ??ft)
E06-005-16S (41.976797, 87.739348 - ??ft)
E06-006-16S (41.976714, 87.739204 - ??ft)
E06-007-16S (41.976575, 87.738952 - ??ft)
E06-008-16S (41.976546, 87.738836 - ??ft)

E06-009-16S (41.976462, 87.738736 - ??ft)
E06-010-16S (41.976368, 87.738699 - ??ft)
E06-011-16S (41.976279, 87.738629 - ??ft)
E06-012-17S (41.976997, 87.739622 - 33ft)
E06-013-17S (41.976578, 87.738872 - 33ft)
E06-014-17S (41.976391, 87.738749 - 33ft)
E06-015-17S (41.976362, 87.738740 - 33ft)
E06-016-17S (41.976293, 87.738657 - 33ft)

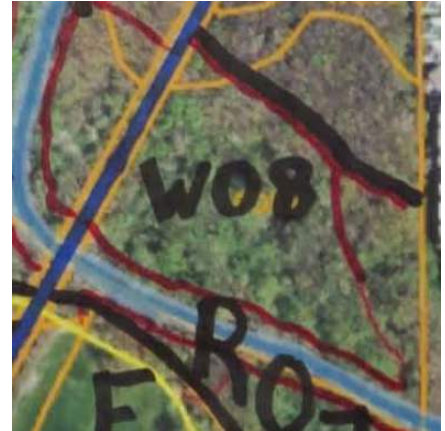
R07: Begins at Railroad Grade / Trestle and includes the river's edge, floodplain forest and forested slope to the border with Gomper's Park, as well as the whole drainage ravine that runs along the Gomper's Park border.

R07-001-15F (41.977389, 87.739184 - ??ft)
R07-002-15F (41.977259, 87.739237 - ??ft)
R07-003-15F (41.977235, 87.738841 - ??ft)
R07-004-15F (41.977223, 87.738803 - ??ft)
R07-005-15F (41.977023, 87.739331 - ??ft)
R07-006-15F? (41.977156, 87.739268 - ??ft)
R07-007-15F (41.977073, 87.738730 - ??ft)
R07-008-15F (41.976907, 87.738880 - ??ft)
R07-009-15S (41.977049, 87.738750 - ??ft)
R07-010-15S (41.976858, 87.738727 - ??ft)
R07-011-15F (41.976971, 87.738556 - ??ft)
R07-012-15F (41.976817, 87.738653 - ??ft)
R07-013-15F (41.976944, 87.738512 - ??ft)
R07-014-15F (41.976895, 87.738466 - ??ft)
R07-015-15S? (41.976567, 87.738449 - ??ft)
R07-016-15S (41.976514, 87.738529 - ??ft)
R07-017-15S (41.976583, 87.738379 - ??ft)
R07-018-15S (41.976461, 87.738205 - ??ft)
R07-019-15S (41.976363, 87.738189 - ??ft)
R07-020-16S (41.977841, 87.739845 - ??ft)
R07-021-15F (41.977502, 87.739729 - ??ft)



LITTLE SLOUGH & WET PRAIRIE OAK GROVE (NE AREA)

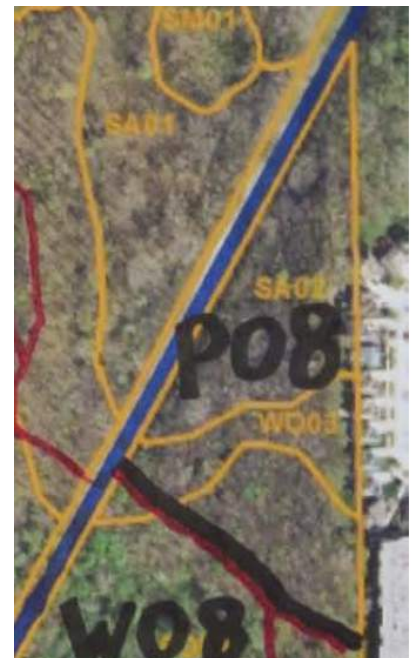
W08: This is the area north of the river between the trestle and the private property to the east. This area has a small wetland area that usually remains wet most summers. There are no plantings in this area as of spring 2016.



W08-001-17S (41.978836, 87.739635 – 16m)
W08-002-17S (41.978900, 87.739655 – 33m)
W08-003-17S (41.978938, 87.739557 – 16m)
W08-004-17S (41.978929, 87.739583 – 16m)
W08-005-16F (41.978945, 87.739672 – 16m)
W08-006-16F (41.978966, 87.739528 – 16m)
W08-007-16F (41.978848, 87.739534 – 16m)
W08-008-16F (41.978692, 87.739173 – 33m)
W08-009-16F (41.978737, 87.739118 – 16m)
W08-010-17S (41.978562, 87.738739 – 16m)
W08-011-17S (41.978457, 87.730928 – 33m)
W08-012-17S (41.978141, 87.739358 – 16m)
W08-013-17S (41.978133, 87.739187 – 16m)
W08-014-16F (41.978294, 87.738729 – 16m)
W08-015-16F (41.978258, 87.738526 – 16m)
W08-016-16F (41.978214, 87.738375 – 16m)
W08-017-16F (41.978238, 87.738516 – 33m)
W08-018-16F (41.978133, 87.738521 – 16m)
W08-019-16F (41.978990, 87.739478 – 33m)
W08-020-16F (41.979175, 87.739628 – 16m)

P08: The upland wet prairie area that currently is overgrown with pole trees, but does have a significant Swamp White Oak grove on its north edge. This area is bordered on the north by the old cemetery.

P08-001-17S (41.979690, 87.739389 – 16m)
P08-002-17S (41.979670, 87.739311 – 16m)
P08-003-17S (41.979635, 87.739293 – 16m)
P08-004-17S (41.979572, 87.739444 – 16m)
P08-005-16F (41.979296, 87.739488 – 16m)
P08-006-16F (41.979098, 87.739098 – 16m)



SAUGANASH QUADRANT (NW AREA)

We have not created any planting areas in this quadrant, as stewards Larry Hodak and Pete Leki actively manage this area. We will use the numbers 9 and 10 in this area if they ask us to do any native shrub plantings in this quadrant in the future.